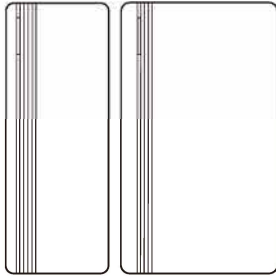


Proximity Reader ApProxM



User Manual

1. Introduction

The readers are Wiegand Output Proximity Readers, compatible with 125KHz EM or 13.56MHz Mifare card. The reader is fully potted, which allows it can be mounted either indoor or outdoor.

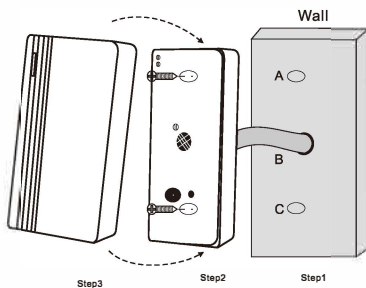
2. Specifications

Model	Mini		
Operation Voltage		9~18V DC	
Working Current		< 100mA	
Frequency		125KHz or 13.56MHz	
Card Type		EM 125 kHz card	
Read Range		0~5 cm	
Output Format		EM: Wiegand 26bits (default), 34bits optional I	
Operating Temperature		EM Reader: -40°C~60°C(-40°F~140°F) Mifare Reader: -25°C~60°C(-13°F~140°F)	
Operating Humidity		10% to 98% RH	
Color		Black	
Index of Protection		IP66	
Dimension (H x W x T)	70x37x17mm		
Net Weight	48g		
Shipment Weight	88g		

- 01 -

3. Installation

- Drill 2 holes (A, C) on the wall for the screws and one hole for the cable
- Knock the rubber bungs to the holes (A, C)
- Thread the cable through the cable hole (B)
- Fix the unit on the wall with 2 screws
- Attach the front cover to the unit



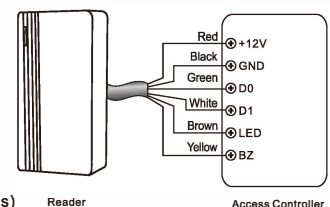
- 02 -

Wiring

Model	Function	Notes
Red	Power	+DC (9-18V DC)
Black	GND	Ground
Green	D0	Data 0
White	D1	Data 1
Brown	LED	Green LED Light Control
Yellow	Buzzer	Buzzer Control

(Remarks: Brown and Yellowwires are optional connections)

Connection Diagram



4. Function Table sheet

Read Card	The LED light will turn into Green, and the buzzer sounds a beep, at the meantime, the reader outputs the Wiegand signal
External LED Control	When the input voltage for LED is low, the LED will turn into Green
External Buzzer Control	When the input voltage for Buzzer is low, the Buzzer will sound
Wiegand Data Output	Wiegand 26 or 34 bits available, factory default setting is Wiegand 26 bits for EM type, and 34bits for Mifare type

Packing List

Name	Quantity
Reader	1
Manual	1
Wall Fixing Plugs	2
Self Tapping Screws	2

- 03 -